

# “Business and Human Rights” eLearning introduction

経済人コーポラ卓会議日本委員会

CAUX  ROUND TABLE

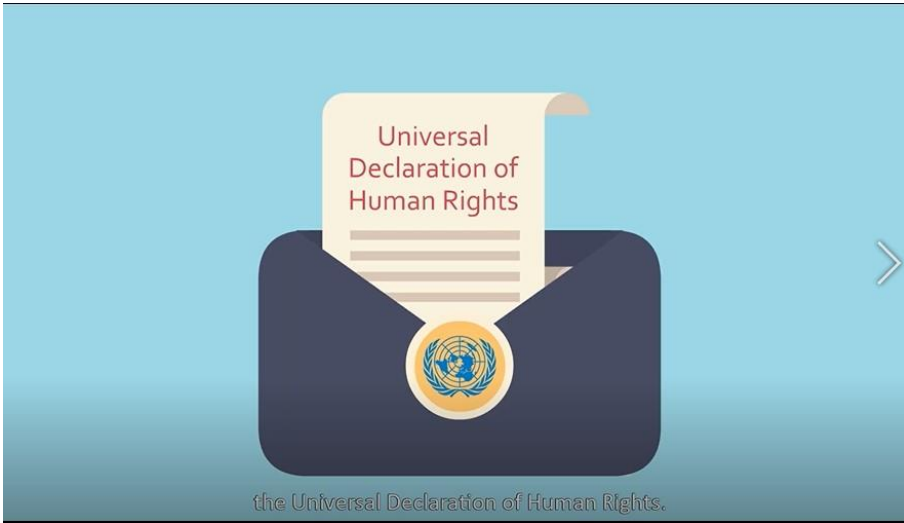
# eLearning Lessons on Business and Human Rights

Caux Round Table works with ELEVATE since 2017 to prepare client customized Human Rights eLearnings, combining expertise on human rights of Caux Round Table Japan, and experiences on lesson development of ELEVATE. Lessons are developed in multiple languages and subtitled. Published lessons can be provided in MP4 (non-interactive) or SCORM (interactive) formats.

## Delivered Lessons examples

| Client    | Lesson 1  | Lesson 2  | Lesson 3   |
|-----------|---|---|--|
| ANA       | Introduction to Human Rights (English, Japanese, Chinese) | Respecting Human Rights at ANA (English, Japanese, Chinese) | Preventing Human Trafficking (English, Japanese) |
| Fuji Oil  | Introduction to Human Rights (English, Japanese, Chinese) | Fuji Oil Human Rights (English, Japanese, Chinese)          | /  |
| Ajinomoto | Introduction to Human Rights (English, Japanese, Chinese) | Ajinomoto Human Rights (English, Japanese, Chinese)         | /  |

# Basic Lessons on Human rights (Lesson 1)

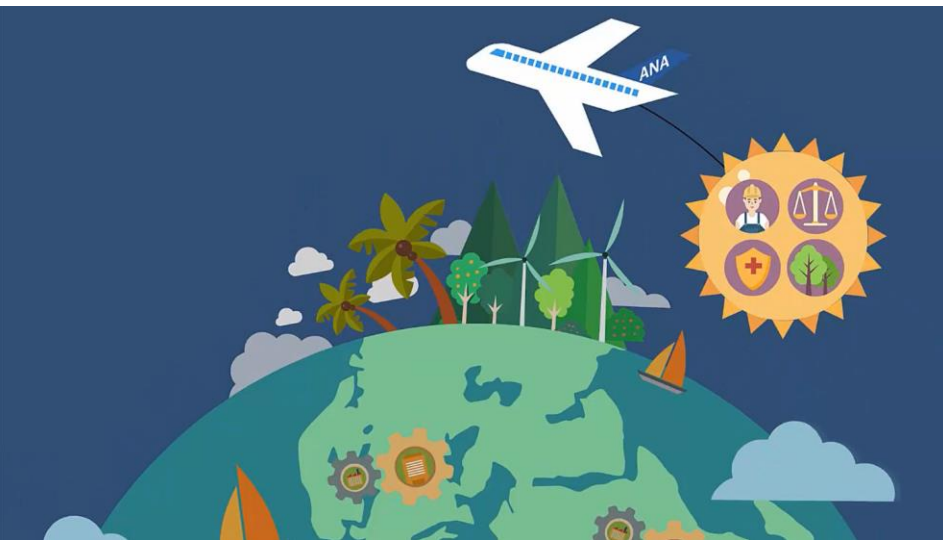


**Introduction to Human Rights: 7 minutes; EN/CN/JP**

# Customized Lessons on Human rights (Lesson 2)



ANA



**ANA Human Rights Policy: 7 minutes; EN/CN/JP**

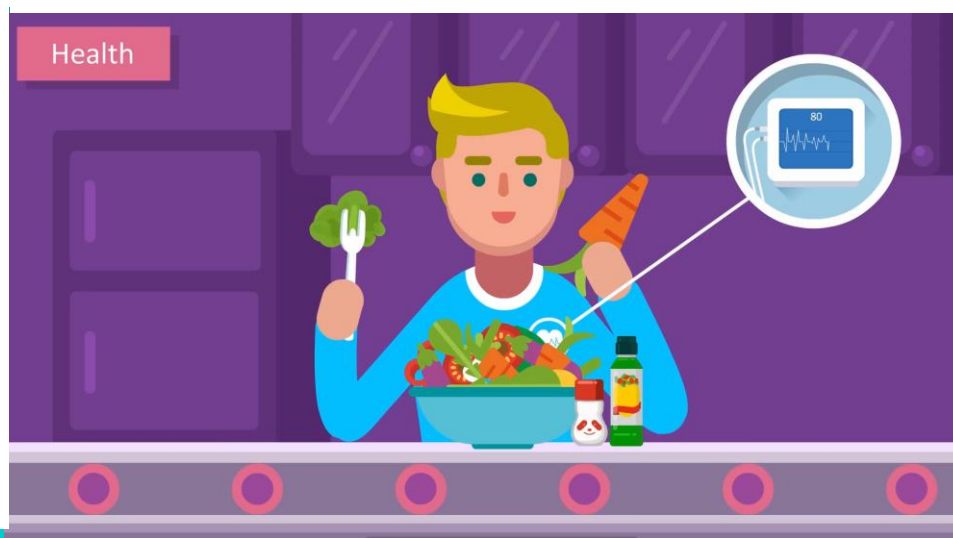
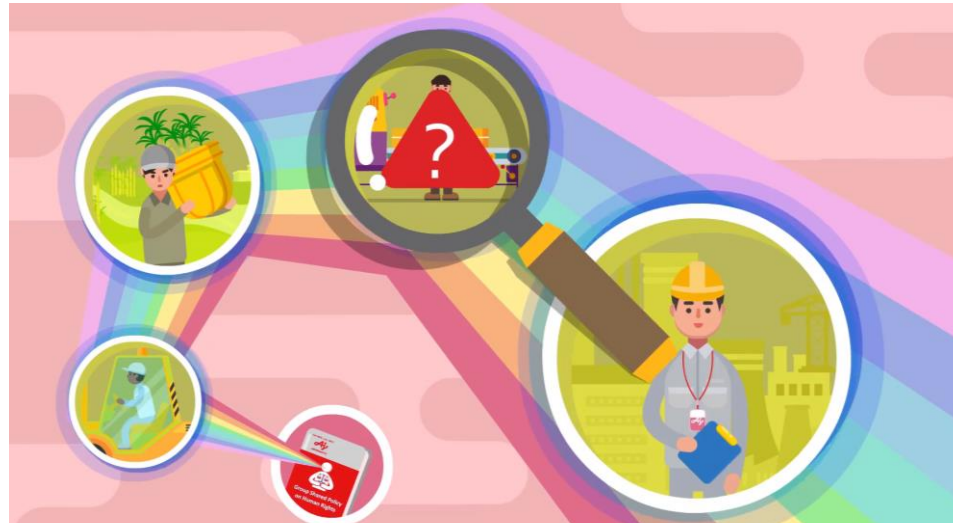
# Customized Lessons on Human rights (Lesson 2)



**Fuji Oil Human Rights Policy: 6 minutes; EN/CN/JP**

# Customized Lessons on Human rights (Lesson 2)

Eat Well, Live Well.



**Ajinomoto Human Rights Policy: 6 minutes; EN/CN/JP**

# About us

## Caux Round Table Japan

Caux Round Table (CRT) is a global network of business leaders working to realize a fair, free and transparent society through sustainable and socially responsible business. Since its establishment in 1986, at Caux in Switzerland, the members of CRT have been working to promote corporate social responsibility (CSR) and responsible business behavior based on the CRT Principles for Business.

Caux Round Table Japan (CRT Japan) started its activities in Japan as a registered NPO (Non-Profit Organization) in 2006. As a founding member of CRT, CRT Japan has been providing a unique service that helps companies implement CSR. CRT Japan has started working on “Business and Human Rights” in 2012. It mainly assists Japanese companies in developing Human Rights Policies, conducting Human Rights due diligence, impact assessment, stakeholder dialogues, training on Human Rights, and preparing reports on Human Rights.

## ELEVATE

ELEVATE is one of the world’s leading social compliance assessment and improvement service providers operating in the rapidly growing market for supply chain sustainability and risk management services. With operations in over 30 countries, the Company works with sourcing, procurement, and compliance executives by providing services to build, implement, and operate effective strategic supplier responsibility programs. It helps organisations transition from reactive to proactive and predictive.

ELEVATE was formed in April 2013 with the merger of the companies Level Works and INFACCT Global Partners. Level Works was a leader in developing and implementing customized global monitoring programs driving transparency and continuous improvement in factories. INFACCT had established itself as the leading factory capacity building advisory services firm. Together we touch thousands of factories and tens of thousands of workers across the globe. ELEVATE works with 20% of the Fortune 100 and conducts over 12,000 factory audits per year.

# THANKS!

For our Human Rights lessons prepared together with ELEVATE,  
please contact from <http://crt-japan.jp/contact/>